

Gas Leak Viewer MAINTe PRO™

ISO9001



JQA0950

GAS LEAK VIEWER™ MK-750ST

Contribute to Energy Saving by visualizing gas leak position.

**Visualizing of gas leak position
makes it easy to find with a glance.**



Example of wearing
a waist bag*



Size comparison between
MK-750 and MK-750ST



Patent Pending



Weight is about 740g (including battery)
Able to operate with one hand!

Characteristics

- Small and lightweight! One hand operation available!
- New TFT LCD for easy detection outdoors!
- Newly equipped "Approximate Leak Amount Displaying Function"!
- Specifies leak position in wide range in short time.
- Detects gas leak from a distance. Suitable for elevated pipes.
- Optional waist bag* for easy portability

Website QR code



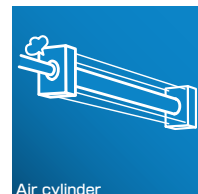
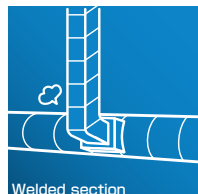
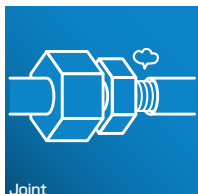
JFE Advantech Co., Ltd.

Use examples

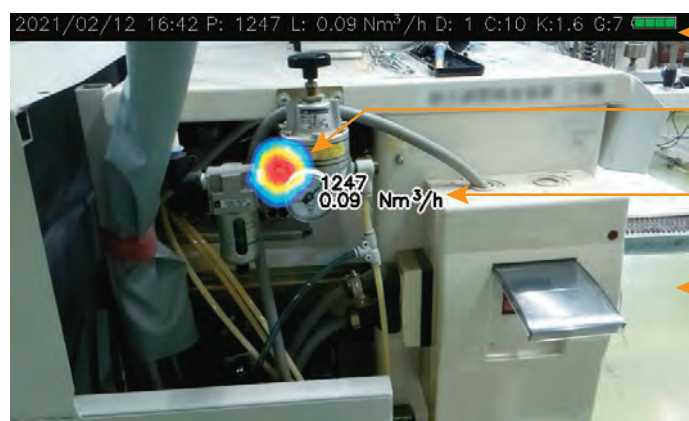
- Detect gas leak from pin-holes created by corrosion on pipe.
- Detect leaks caused by deteriorated seals and loose flanges.
- Detect gas leak from regulator joints.
- Detect leaks from sections with welding defects.
- Detect gas leak from welder air-tube.
- Detect suction into vacuum pipes.

Type of gases does not matter if it is air, steam, nitrogen, argon, or any other kind of gas!

*MK-750ST may be unable to detect depending on detection environment and leakage speed.



Display description



Status bar

Displays measurement information such as date & time, sound pressure peak, leak amount, and etc.

Sound pressure map

Able to identify leak spot by displaying colored areas with high sound pressure level.

Displays sound pressure and leak amount (configurable to be disabled)

Displays maximum sound pressure value and leak amount by inputting the distance to the target.

Photo image

Adapted LCD (with brightness adjustment function) that does not lose its visibility in outdoors under sunny weather.

*Approximate leak amount display is estimated value using our test equipment.

*Units used for indicating leak amount: L/min, m³/h, Nm³/h

Specifications

Model	MK-750ST-E
Ultrasonic sensor	Center frequency 40kHz
Detecting performance	Able to detect leaks in 7 meter distance with pressure 70kPa from 0.2mmφ holes. *Data at our laboratory
Detection display range	Approx. 62 degrees horizontally and 35 degrees vertically
Display	4.3 inch LCD / 800 x 480 pixels
Display refresh frequency	Approx. 5 times/sec
Other functions	Peak hold, approximate leak amount display, and sleep mode
Recording contents	Superimposed image of sound pressure map (JPEG), Camera image (JPEG), Sound pressure map data (CSV), Data list file (CSV)
Data recording	No. of records: 3,500 or more (Recording media: Internal memory (1GB))
Data output	USB communication (Compatible OS: Windows8.1, Windows10)
Power source	Lithium-ion battery (Continuous operation time length: Approx. 8 hrs. / Full charge time: Approx. 3 hrs.)
Outer dimensions	W182mm x H114mm x D64mm (excluding wrist strap and protector)
Weight	Approx. 740g (including battery, excluding wrist strap and protector)
Standard configuration	Main unit, Battery pack (RRC2057), Battery charger (RRC-SMB-MBC), Wrist strap (MK-9907), Protector (MK-9909), USB cable (U2C-MF10BK), and Instruction manual
Options	Battery pack [as a spare] (RRC2057), Neck strap (MK-9908), Carrying case (MK-9705), Waist bag (MK-9706), Oscillator (MP-161-S001).

*Specifications are subject to change without notice.

*Please contact us about CE marking model.



JFE Advantech Co., Ltd.

JFE

URL : <https://www.jfe-advantech.co.jp/eng/>

Tokyo Sales Office (Overseas Sales Department)

JFE Kuramae Bldg., 2-17-4 Kuramae, Taito-ku, Tokyo

111-0051, Japan

Tel. +81-3-5825-5577 Fax. +81-3-5825-5591 e-mail : tokyo@jfe-advantech.co.jp

Head Office and Factory

3-48, Takahata-cho, Nishinomiyashi, Hyogo Pref.

663-8202, Japan

Tel. +81-798-66-1508 Fax. +81-798-65-7025