

3. USB DRIVER

3-1. Installation of USB driver

Before you launch this software, the driver should be once surely registered. Access between the instrument and a PC through the USB cable supplied by us as standard accessory. Refer 3-1-1.

When you try to connect your Infinity-unit to PC with other instruments or USB serial conversion cable, etc. being connected to the USB terminal, your PC might fail to recognize the instrument or show an error message. This is due to the fact that the driver software of other instruments on the PC may falsely recognize the information of the USB connected. In this case, take off all the instruments being connected to the USB terminals and then re-connect the INFINITY instrument.

3-1-1. Driver for Infinity SD Data Logger

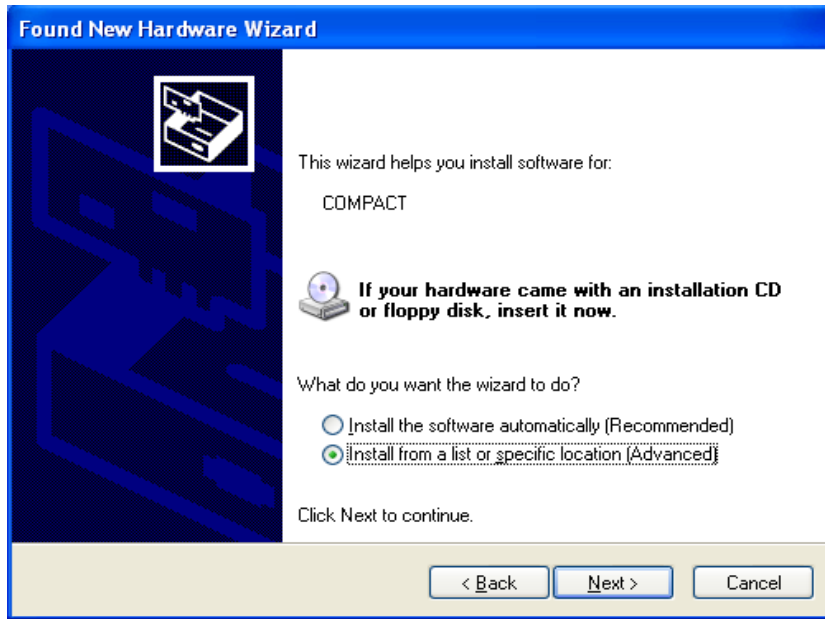
After the PC is connected through the USB, the following message shows up on the task bar of Windows screen.



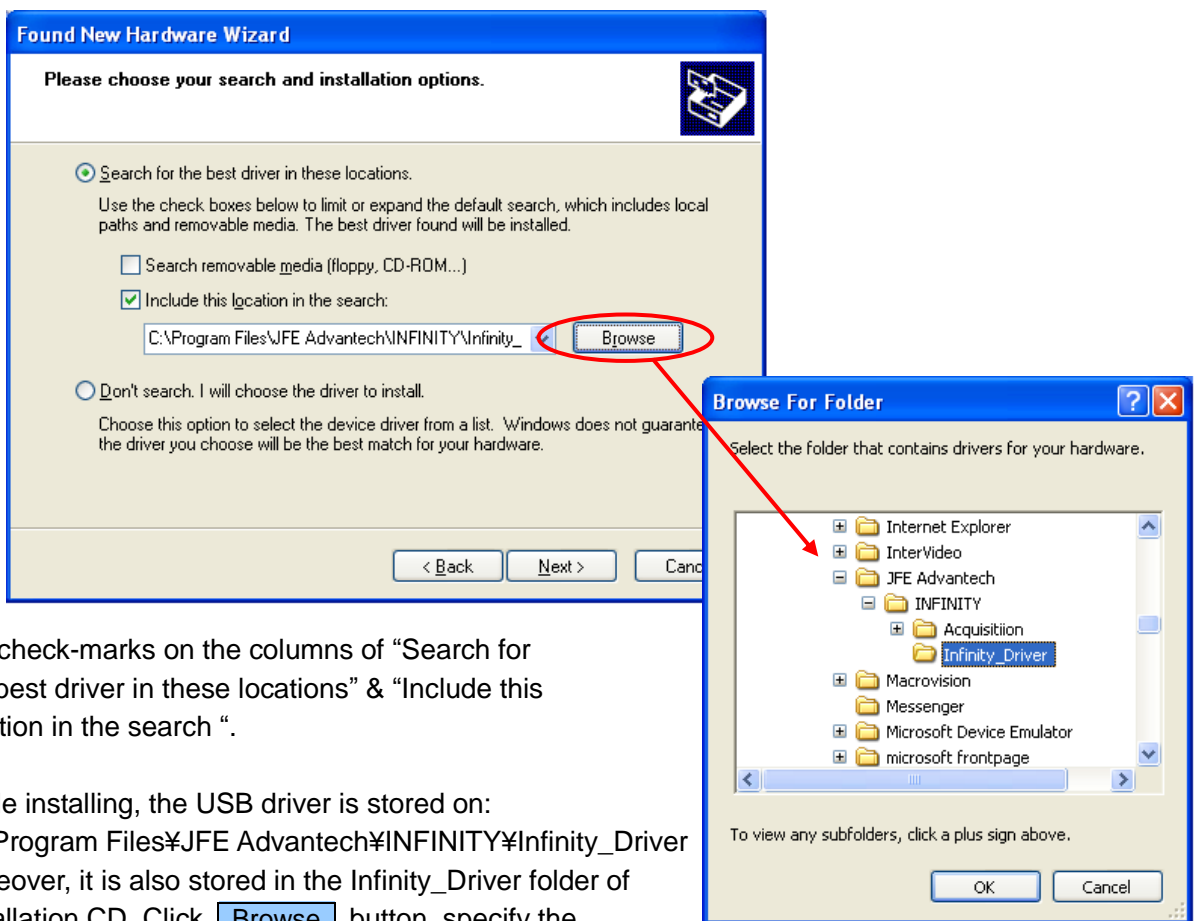
And “Found New Hardware” Wizard is launched.



Put a check-mark on the column of “No, not this time “ and click **Next>** button.

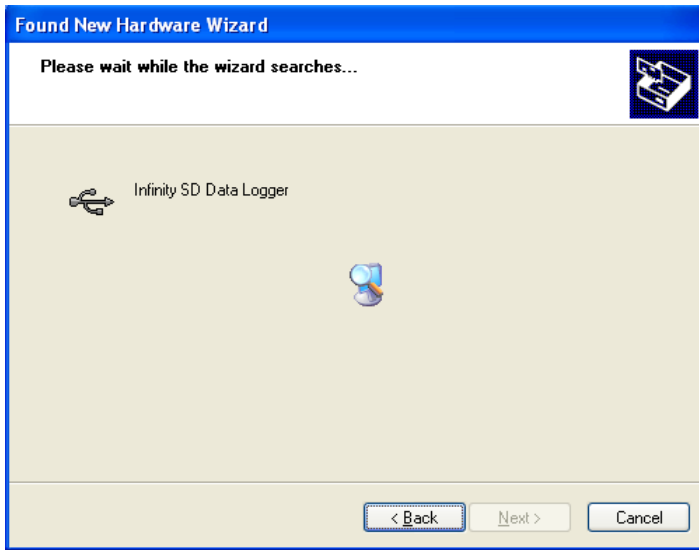


Put a check-mark on the column of “Install from a list of specified location (Advanced)” and click **Next>** button.



Put check-marks on the columns of “Search for the best driver in these locations” & “Include this location in the search “.

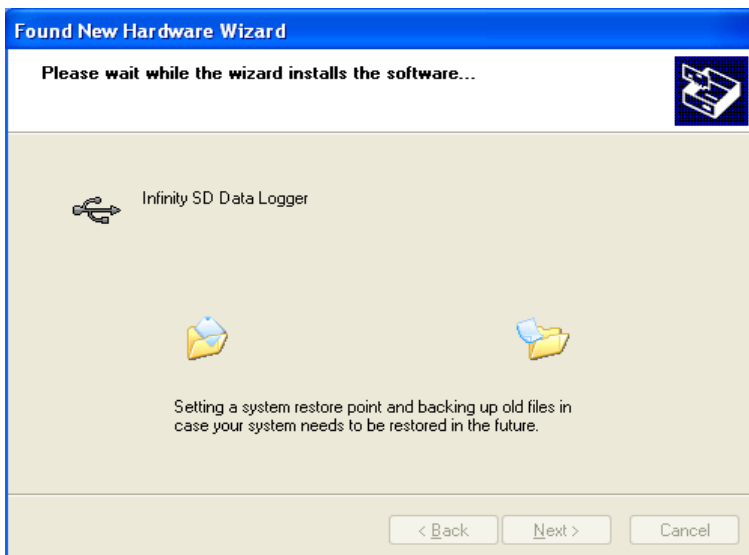
While installing, the USB driver is stored on:
 C:¥Program Files¥JFE Advantech¥INFINITY¥Infinity_Driver
 Moreover, it is also stored in the Infinity_Driver folder of installation CD. Click **Browse** button, specify the folder stored in the USB driver and click **Next>** button.



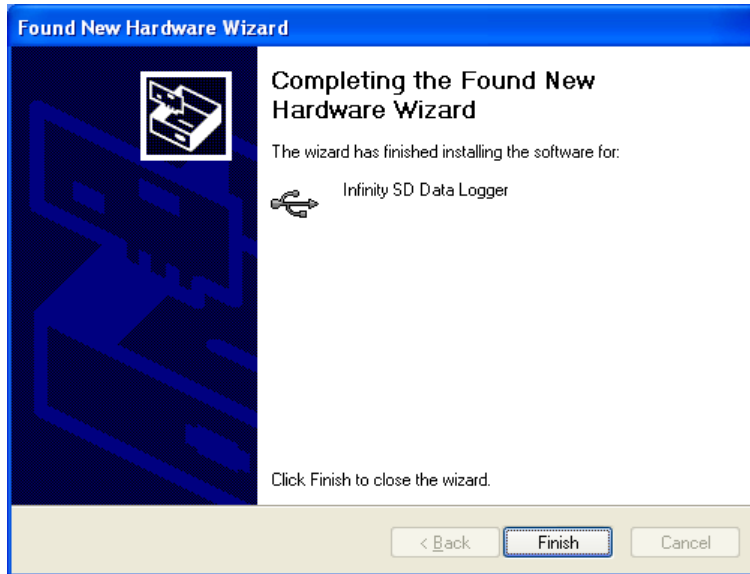
“Found New Hardware” Wizard is launched and the following screen appears.



Click **Continue Anyway** button.



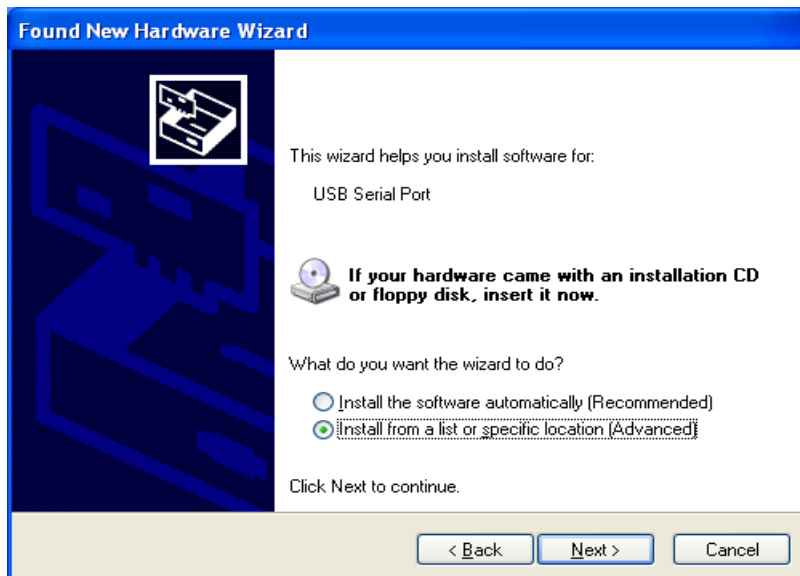
The installation of the driver is commenced.



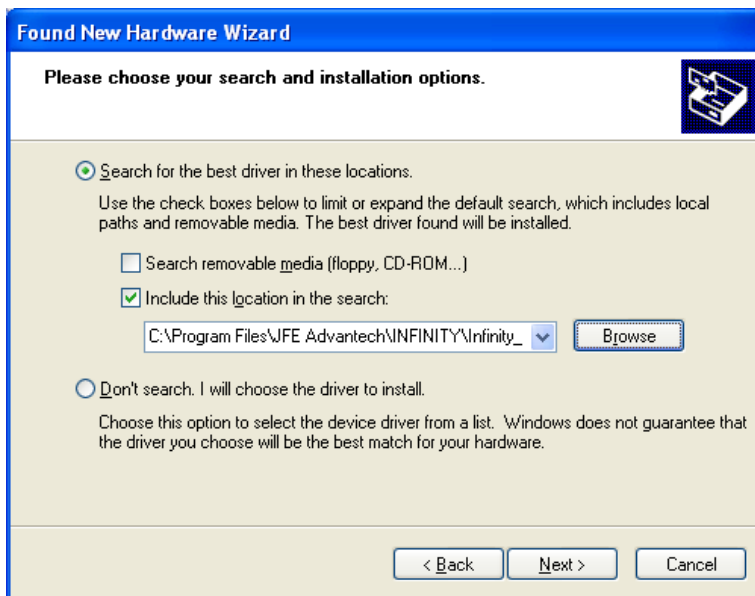
Click **Finish** button to complete the installation of Infinity SD Data Logger driver.

3-1-2. USB Serial Port Driver

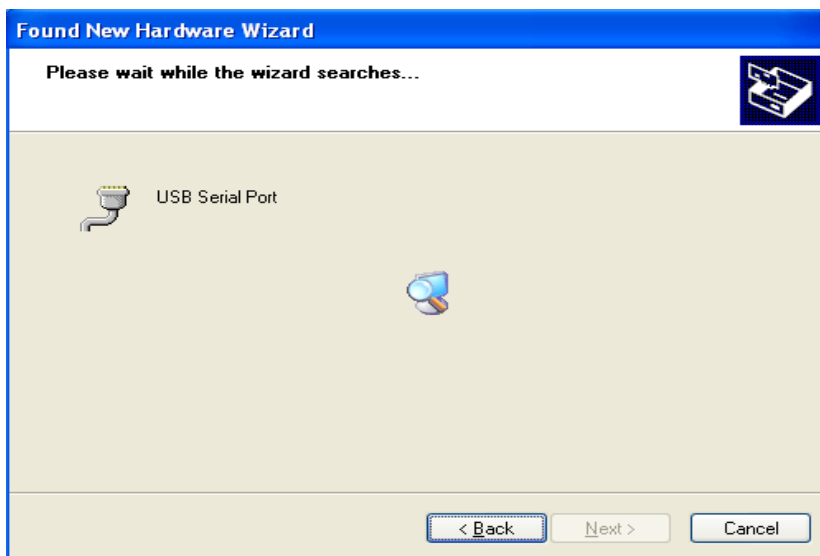
After the Infinity SD Data Logger driver is installed completely, it is necessary to install the USB Serial Port driver. The operation is almost same as the above procedure.



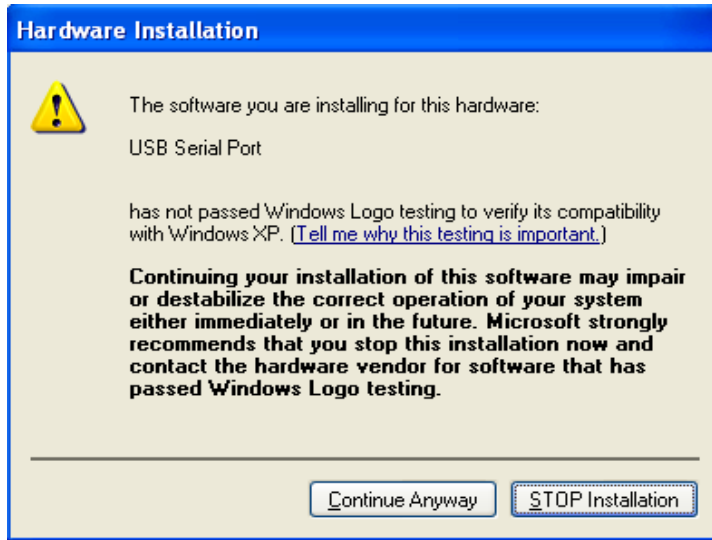
Put a check-mark on “ Install from a list of specific location (Advanced)” and click **Next>** button.



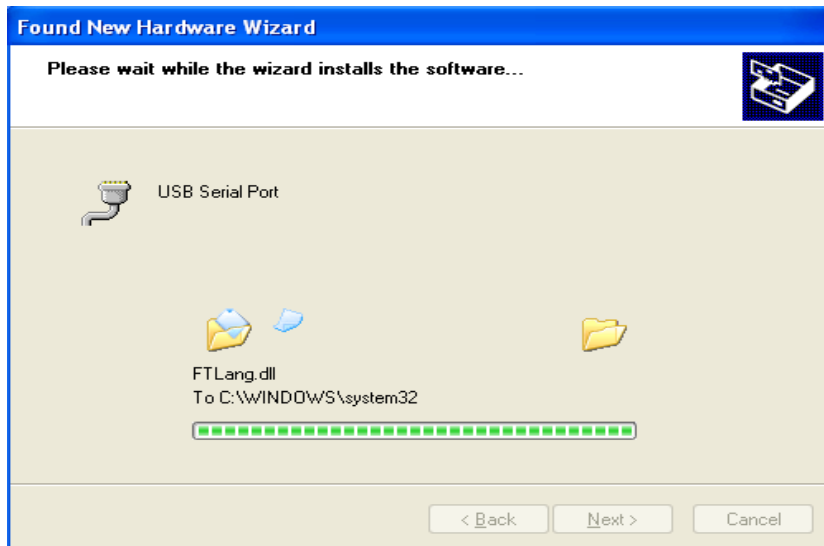
Choose the driver folder and click **Next>** button.



The Wizard of “Found new hardware” is launched and then, the following screen appears.



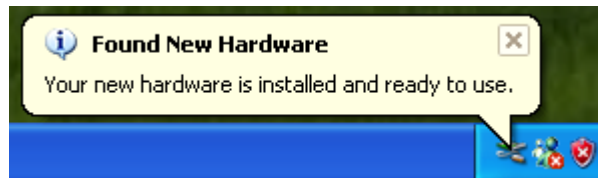
Click **Continue Anyway** button.



The installation of the driver is being commenced.



Click **Finish** button to complete the installation of the USB Serial Port driver.



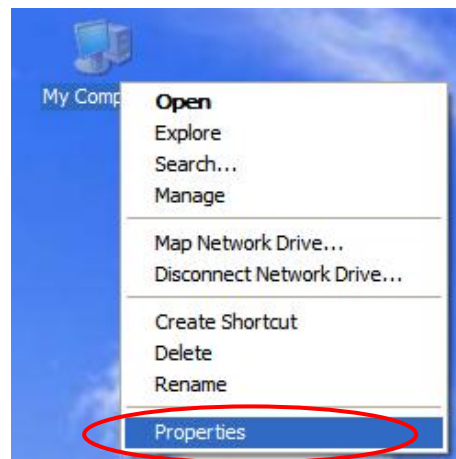
With the above procedure, the installation of the driver in this instrument has been completed entirely.

3-2. Reinstall a USB driver

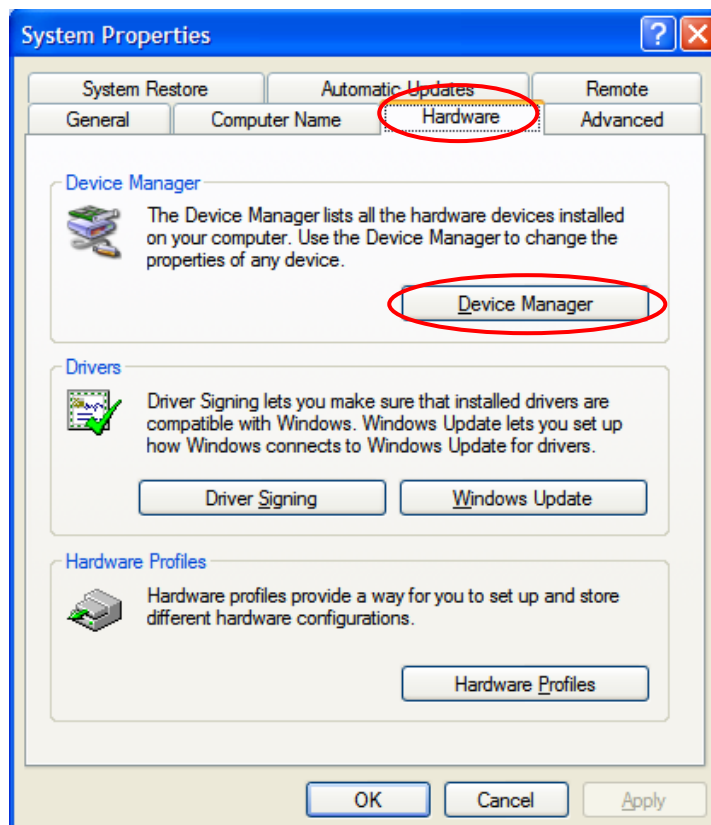
When you install a USB driver and run this software, the instrument name and its information will be displayed as the software recognizes the instrument on your connecting it and your PC through USB.

Should the recognition fail by some reason, you are asked to follow the below procedure and to make a reinstall of USB driver.

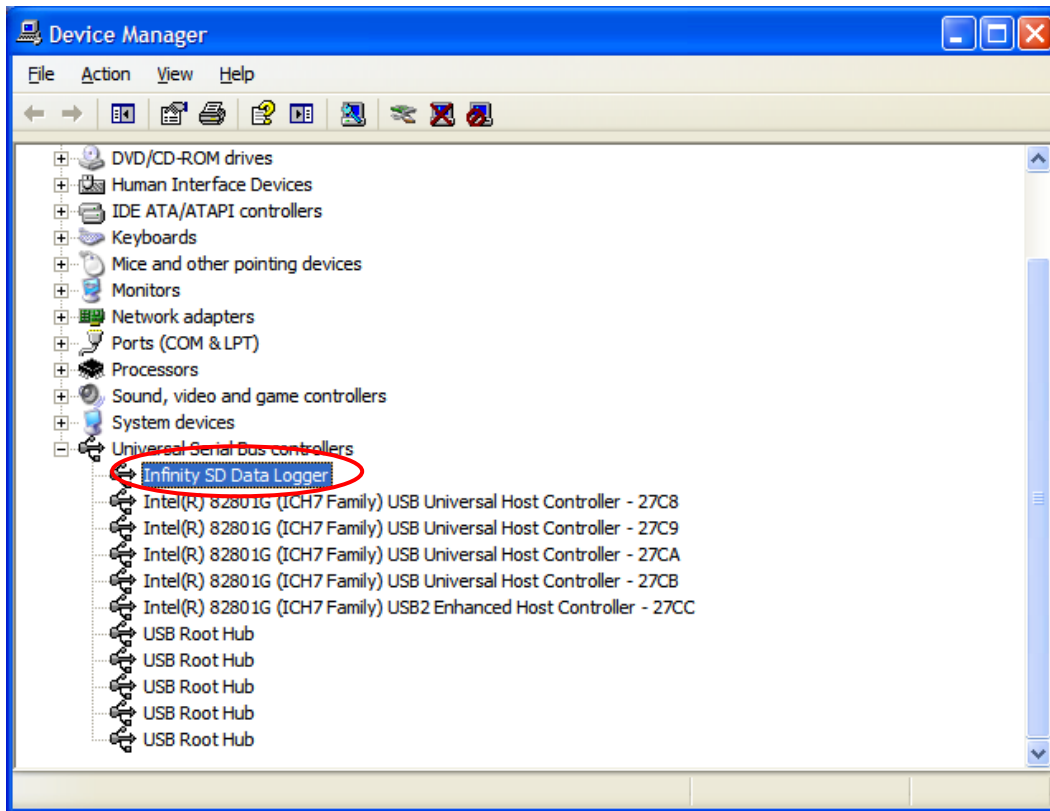
- 1) Right click on "My Computer" on the desktop and select "Property" from the pull-down menu.



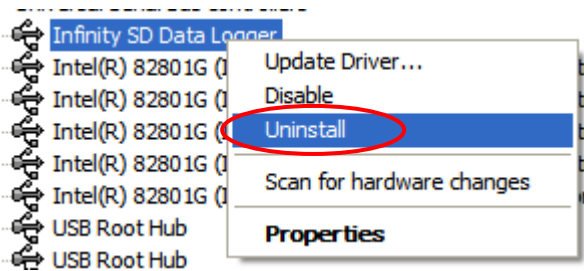
- 2) System properties window should appear. Select "Hardware" tab and then click **Device Manager** button.



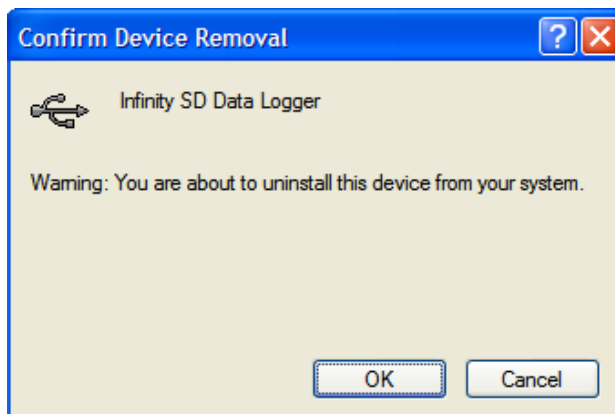
After seeing Device Manager window being activated, connect the instrument and your PC through USB cable. Items of "Infinity SD Data Logger" are displayed on the screen.



Right click on "Infinity SD Data Logger" to delete it from your PC.



When you see below pop-up window for confirmation, click **OK** button.



After a while, USB driver will be deleted.

Confirming the deletion, disconnect USB connection between the instrument and PC. Connect them again. You shall see below message at the right bottom of the desktop window.



Reinstall a USB driver on your PC in accordance with the chapter 3-1-1. Infinity SD Data Logger.