

# Logger Version Conductivity and Temperature Sensor with Wiper

## INFINITY-CTW

C

T

ACTW-USB



### Overview

Generally, conductivity sensors are highly sensitive to contamination, including biological fouling. Long-term continuous observations typically require maintenance every 1 to 2 weeks, which can be labor-intensive. The salinity sensor of the INFINITY-CTW employs an in-tube electrode sensor, ensuring that external contamination does not affect the measurements at all. Additionally, the in-tube area is automatically cleaned by a piston-type wiper after each measurement, allowing for stable data acquisition even without maintenance for 2 to 3 months.

### Sensor Specifications

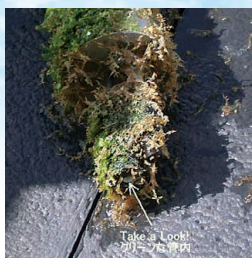
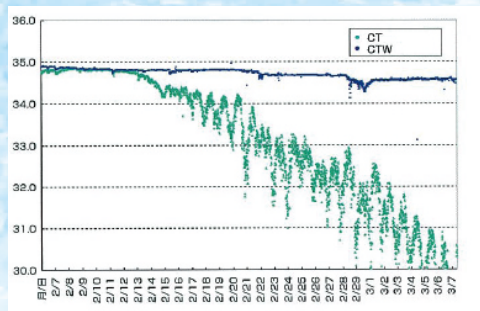
Parameter	Temperature	Conductivity
Sensor Type	Thermistor	7-Electrode Type
Range	-3 to 45°C	0.5 to 70 mS cm <sup>-1</sup> *
Resolution	0.001°C	0.001 mS cm <sup>-1</sup>
Accuracy	±0.01°C (0 to 35°C)	±0.01 mS cm <sup>-1</sup> *

\*Calibration is performed using seawater (in the range of 28 to 65 mS cm<sup>-1</sup>). For use in freshwater, please contact us.

### Logger Specifications

Memory Type	microSD card (waterproof high-speed type)
Memory Capacity	1GB
Mode	Continuous Mode / Burst Mode
Interval	0.1 to 600 sec
Burst	1 to 1,440 min
Number of Samples	1 to 18,000
Battery	CR-V3 Lithium Battery / 3.3 Ah (Up to 4) AA Alkaline Battery (Up to 8) - Requires AA adapter kit AA Lithium Battery (Up to 8) - Requires AA adapter kit
Communication Method	USB communication (compliant with Ver. 2.0, equivalent to Ver. 1.1)
Housing Material	Titanium Grade 2
Dimensions	φ70 mm × 342 mm (including sensor guard)
Weight	Approx. 1.5 kg in air / Approx. 0.7 kg in water
Pressure Resistance	Equivalent to 500 m depth

### Observation Examples



### Photo After Retrieval

### Drawing

